

# MISSISSIPPI IS HIRING A DEPUTY CHIEF MEDICAL EXAMINER

Photo by Lazy Lab Productions

The Office of the State Medical Examiner (OSME) for the state of Mississippi is hiring a Deputy Chief Medical Examiner for the headquarters office located in Jackson, MS, the state capital. **The annual salary is \$225,000.**

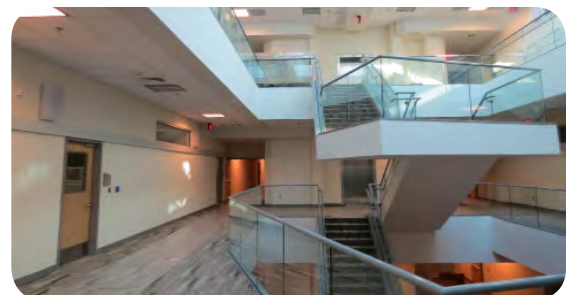
## ABOUT THE OFFICE OF THE STATE MEDICAL EXAMINER

The OSME falls under the Mississippi Department of Public Safety. The office is co-located within and directly affiliated with the Mississippi Forensics Laboratory headquarters in the new \$30 million state-of-the-art facility in Jackson, MS. There are three regional forensic laboratories throughout the state and one regional Gulf Coast Medical Examiner's Office located in Biloxi, MS. The OSME performs approximately 1,450 postmortem examinations annually for all 82 counties and one reservation. The OSME is affiliated with the University of Mississippi Medical and Dental Schools.



## FACILITY HIGHLIGHTS:

- + **Four Main Autopsy Stations**  
each with a mounted 55" color monitor/computer for X-ray viewing and entering patient data
- + **Quantum Wireless Digital Medical Imaging System**  
used for full body radiology
- + **Avreo Radiographic Imaging Software**
- + **JusticeTrax Software**  
evidence barcoding and final autopsy reporting
- + **NOMAD Pro2 Dental Imaging System**  
with DEXIS Platinum Software System
- + **One Dedicated Forensic Anthropology Suite**



# MEET THE STAFF

OSME HEADQUARTERS



## Mark M. LeVaughn, M.D.

Chief Medical Examiner

Dr. LeVaughn is from Steubenville, Ohio. He received his M.D. from the University of Tennessee in 1983. He completed his Pathology residency at the West Virginia University Medical Center and his Forensic Pathology Fellowship at the University of Tennessee. He received his ABP certification in Anatomic and Forensic Pathology in 1991. He has held medical licenses in Kentucky, Indiana, Illinois, New York and Mississippi.



## David K. Arboe, II, M.D.

Deputy Chief Medical Examiner

Dr. Arboe is originally from Tennessee. He graduated from medical school at St. Matthew's University School of Medicine. He completed his Anatomic and Clinical Pathology residency at Case Western Reserve - MetroHealth in Cleveland, OH and his Forensic Pathology fellowship at the Allegheny County Medical Examiner's Office in Pittsburgh, PA. Dr. Arboe is board certified by the American Board of Pathology in Anatomic, Clinical and Forensic Pathology. He has a license to practice medicine in Mississippi, Oklahoma and Pennsylvania.



## John A. Lewis, Jr., D.D.S., DABFO

Forensic Odontologist

Dr. Lewis completed his undergraduate studies at the University of Wisconsin and then graduated from Marquette University School of Dentistry (Milwaukee, WI) in 1981. He earned diplomate status with the American Board of Forensic Odontology in 1992 and served as President of that organization from 2004-2005. He retired from the United States Navy Dental Corps in 2009 and has served as the forensic odontologist with the Mississippi State Medical Examiner's Office since that time.



## Anastasia Holobinko, Ph.D.

Forensic Anthropologist

Originally from northeast Ohio, Dr. Holobinko earned her M.S. in Zoology and Ph.D. in Physical Anthropology from Southern Illinois University Carbondale. She specializes in the stable isotope profiling of human tooth enamel and bone, and is working toward board certification with the American Board of Forensic Anthropology. Dr. Holobinko has studied and lectured at universities in the United States and Canada, and has authored and edited publications covering topics in stable isotope analysis, anthropology, and animal behavior.



## Steven Symes, Ph.D., DABFA

Forensic Anthropologist

Dr. Symes received his B.A. degree in Anthropology from the University of South Dakota in 1976. He received his M.A. and Ph.D. in Physical Anthropology from the University of Tennessee in 1992. He has authored numerous publications and lectured all over the world. His expertise is focused on tool marks and burn patterns of skeletal remains.

## ADDITIONAL STAFF:

- + Seven experienced Autopsy Technicians
- + One Office Manager

# Join us in the great state of MISSISSIPPI

26+ Art, Science, and  
Historic Museums

30+ State & National Parks

17+ Campgrounds

2 International Airports

20+ Music Festivals, Film  
Festivals, and More

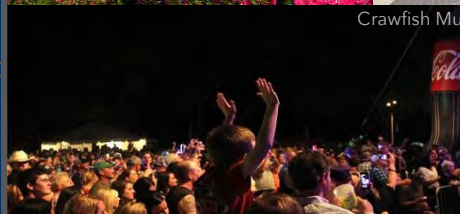
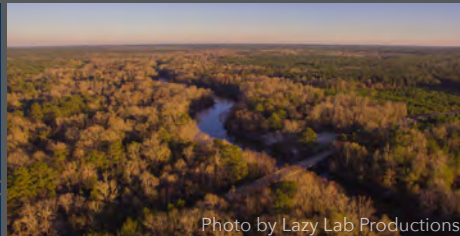
Home of the  
MS Braves & Biloxi Shuckers

Mississippi State, Ole Miss,  
& USM Sports

Less than 3 hours away  
from New Orleans, LA

Less than 3 hours from the  
Mississippi Gulf Coast

Less than 4 hours from  
Memphis, TN



## POSITION OPENING:

# DEPUTY CHIEF MEDICAL EXAMINER

## RESPONSIBILITIES

- Performing postmortem forensic examinations and autopsies
- Assisting in medicolegal death investigations
- Supervising the operational activities of the facility
- Testifying as an expert witness in court
- Other related duties as assigned

## SALARY

\$225,000 per year

## REQUIREMENTS

- Must be a physician (M.D. or D.O.) who has graduated from an accredited school of medicine or osteopathic medicine
- Must have completed an approved residency training in pathology with fellowship in forensic pathology at an accredited institution
- Must be board-certified in anatomic and forensic pathology or board-eligible (to be obtained within three years of hiring) through the American Board of Pathology
- Must obtain medical license to practice in the State of Mississippi, submit state employment application, and pass a thorough background check  
([https://www.ms.gov/medical\\_licensure/renewal/Main.do](https://www.ms.gov/medical_licensure/renewal/Main.do) , 601-987-3079)

## BENEFITS

- State health care program
- Dental insurance program
- Vision insurance program
- Life insurance program
- State contribution to the Public Employees' Retirement System (PERS) of Mississippi  
(<http://www.pers.ms.gov/Pages/Home.aspx>)
- Personal leave
- Medical leave
- Accrued compensation time
- 10 paid state holidays

---

## PLEASE CONTACT:

Mark M. LeVaughn, Chief Medical Examiner, at [mlevaughn@mcl.ms.gov](mailto:mlevaughn@mcl.ms.gov); David Arboe, Deputy Chief Medical Examiner, at [darboe@mcl.ms.gov](mailto:darboe@mcl.ms.gov); or Anastasia Holobinko, Forensic Anthropologist, at [aholobinko@mcl.ms.gov](mailto:aholobinko@mcl.ms.gov)